

# labratester 180

The labratester 180 is a sheet-based gravure printing machine, used across various industries, including ink manufacturing, flexible packaging, printed electronics, and more, delivering reliable results with as little as 1 ml of ink.



**180**

labratester



# Reliable Sheet-Based Gravure Printing Machine for Reproducible Results

The labratester 180 offers precise control and easy operation, making it ideal for testing inks, coatings, and flexible substrates with consistent and reproducible results.

## Applications

- ✓ Research and development in printed electronics
- ✓ Ink, coating and substrate testing
- ✓ Prototype development
- ✓ Quality control testing

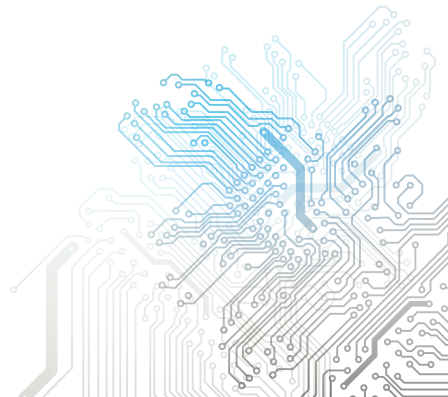
Gravure printing

---



## Technical Data

Printing technology:	Gravure printing with an engraved plate
Substrate size:	Up to 210 x 148 (DIN A5)
Substrate compatibility:	Flexible substrates
Process speed:	Up to 35 m/min.
Dimension (L x W x H):	950 x 580 x 350 mm
Weight:	120 kg
Electrical connection:	1x230V (US 110V via transformer)



## Technologies & Options

- ✓ **Flexible Substrate Handling:** The labratester 180 is designed to print on a wide range of flexible substrates, making it suitable for various industries, including printed electronics, flexible packaging, and R&D.
- ✓ **Low Ink Consumption & Efficient Printing:** The machine is optimized to use less than 1 ml of ink per print, making it cost-effective and ideal for testing expensive functional inks and coatings while delivering clear, reproducible results.
- ✓ **Adjustable Doctor Blade & Roller Pressure:** The labratester 180 provides adjustable doctor blade angle, doctor blade pressure, and impression roller pressure, ensuring optimal printing conditions and high reproducibility in test results.
- ✓ **Easy Cleaning & Maintenance:** With its straightforward cleaning process, the labratester 180 allows for quick exchange of printing forms and inks, reducing downtime and enhancing productivity in laboratory environments.
- ✓ **Compact Design & Optional Features:** The labratester 180's compact footprint makes it perfect for laboratories with limited space. Optional features like electrostatic print assist and customized printing forms are available to meet specific customer needs.
- ✓ **Multilayer Printing Capability:** While not its primary focus, the labratester 180 offers the capability for multilayer printing using different plates. With a simple mechanical alignment tool, it achieves alignment accuracy of  $<100 \mu\text{m}$  without requiring costly camera systems.

