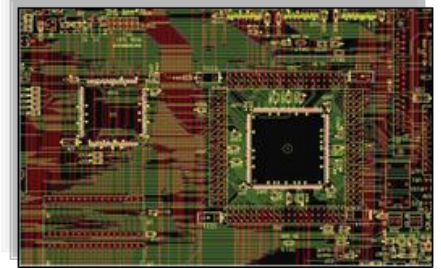


# ConvertPLUS™



## WHAT IS ConvertPLUS?

It is a full-featured, CAM software solution, capable of handling the toughest job. Includes a seamless interface to ScanCAD inspection products.

Eliminate those costly revision iterations, improve time-to-market, and increase overall design quality before data has even left the design stage.

### Feature Highlights:

- Special macro specific to convert Gerber files to ScanCAD-ready files for import.
- HyperNETLIST Extraction can generate netlist information for even the largest of designs in a matter of minutes.
- Import Wizard that loads ALL industry formats (Gerber, Drill, Mill, HPGL, DXF, and more...).
- Intelligent Data Transfer with ODB++, ODB++ (X), and IPC-2581 included in select bundles.
- Database Navigator provides quick and easy access to all necessary information without the need for menus or toolbars.

### Basic Features:

- Single file, 32-Bit "Intelligent" Database Structure
- High Speed Graphics
- 999 Layers, 9999 Apertures
- Integrated Printing
- Polygon Support (Intelligent Raster Fill, POEX/POIN, G36/G37)
- Compositing (Pos & Neg Merging, Paint & Scratch)
- Import Wizard (Detects Gerber, Drill, Mill, HPGL, DXF, and Other Formats. Converts Aperture Tables and Reads Automatically)
- Automatic Aperture and NC Tool List Converter (Rules Based)
- Gerber 274D and 274X Import & Export
- MDA AutoPlot Import (Fire9XXX, Cymbolic Sciences)
- Barco DPF Import
- NC Data Import (Support for Excellon, Sieb & Meyer)
- DXF Import & Export
- HPGL, HPGL/2 Import & Export
- ODB++ Import and Export (Support for Valor and Frontline Solutions)
- OffSpring Import and Export (Support for IPC-2581)
- PostScript Export
- Bitmap Out (Windows BMP, B&W, Color, up to 1000dpi)
- IPC-D-350 Export
- Editing Capabilities (Move, Copy, Delete, Rotate, Mirror, etc.,)
- Adding Capabilities (Flash, Line, Arc, Circle, Rectangle, Polygon, Text, and More)
- IPC-D-356 & 356A Netlist Import and Export

### Analysis Features:

- Browse Errors Directly from Navigator (*Quickly Step Through Violations, Repair, and Check-off*)
- Copper Area Calculation (*Fast and Accurate*)
- Graphical Find Duplicates (*Quickly Locate and Remove Duplicate Data Objects, such as Flashes, Draws, and More*)
- Graphical Layer Compare (*Compare Any Two Layers Quickly and Accurately, Browse Differences Through the Navigator*)

### Macro Scripting Features:

- Powerful Macro Developer (*Drag-and-Drop Capabilities and More*)
- Load, Run, and Record (*Support for Start-Up, Shut-Down, and On-Load Macros*)
- Support for "Nested" Macros (*Embed Macros within Macros*)  
Integrated Debugger (*Watch Points, Stops, Step-Thru, etc.*)

### Advanced Features:

- Database Navigator (*Quick Access to Layers, Apertures, Netlists*)
- Custom Aperture Editor (*Build Special Pads, Logos, etc.,*)
- Object Level Polarity (*Work with Pos & Neg Data on the Fly, Eliminate the Need for Composites*)
- Layer Sets (*Define Layer Sets for Blind & Buried Vias and MCM Stack-Up*)
- Interactive Data Grouping (*Group Objects Together for Fast and Easy Editing*)
- HyperNETLIST Extraction (*Supports SMT, Thru-Hole, Blind & Buried, and MCM*)
- Interactive Draw-to-Flash Conversion
- Draw-to-Custom Conversion (*Convert Drawn Graphics into a Custom Aperture*)
- Raster-to-Vector Conversion (*Convert Raster Fill Polygons to Vector Fill for Older Plotters*)
- Silkscreen Clipping (*Clips Silkscreen Away From Pads*)
- Composite-to-Layer (*Flattens Composite to a Single Positive Layer*)
- Pad Removal (*Isolated or Redundant*)
- Tear-Dropping (*True-Shape and Snoman*)
- Layer Spread (*Tile All Layers to Single Sheet of Film*)
- Layer Scaling
- Merge Multiple PCB Files
- Automatic Draw-to-Flash Conversion (*Convert All Layers at Once, Use Mask Layer as Guide, and More*)



12779 W. Belleview Ave.  
Littleton, CO. 80127 USA

T: +1 303.697.8888 F: +1 303.697.8580  
E: [info@scancad.com](mailto:info@scancad.com) [www.scancad.com](http://www.scancad.com)