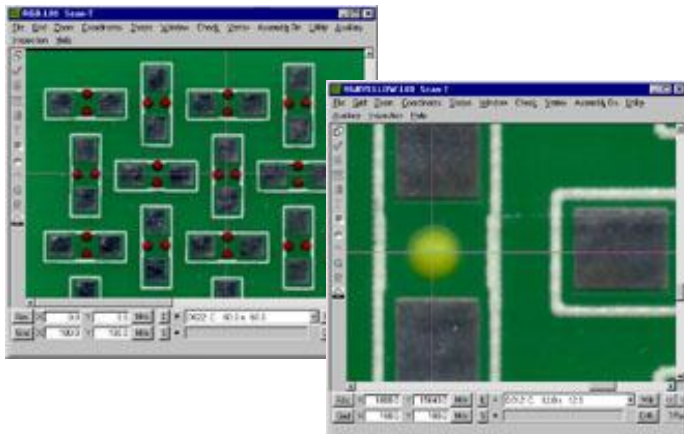


ScanINSPECT ADI™

Inline Automatic Dispense Inspection



WHAT IS ScanINSPECT ADI?

ScanINSPECT ADI provides a simple and user-friendly alternative to inaccurate and time-consuming manual inspection methods or expensive, high-end AOI systems.

ScanINSPECT ADI uses a simple Windows user interface integrated with an automatic table and image-processing unit. This combination allows 100% inspection of adhesive placement on PCBs after dispensing.

HOW DOES ScanINSPECT ADI WORK?

ScanINSPECT ADI's integration within the production line provides 100% verification of absence and presence of glue dot dispensing before entering the placement environment.

Each PCB or substrate is placed from the dispensing or printing machine into ScanINSPECT ADI for 100% inspection. The PCB is then accepted and shuttled to the surface mount machines or rejected. No more surprises!

QUICK & SIMPLE PROGRAMMING

ScanINSPECT ADI uses a golden board to verify absence or presence of wet adhesive glue dots.

INCREASED YIELD & IMPROVED OVERALL EQUIPMENT EFFICIENCY

ScanINSPECT ADI's powerful inspection process increases product yield by ensuring accurate dispensing placement. Thus, assisting with secure component placement and eliminating potential damage to nozzles and other delicate placement machine elements. Missing adhesive can result in very expensive equipment repairs, lost production time and extensive rework.

Missing glue dots are automatically detected. Problems are detected and eliminated before boards are placed into production!

SIMPLICITY

ScanINSPECT ADI set up is fast and easy. In production, each board passes through on the conveyor; it is automatically aligned and checked for accuracy with a PASS or FAIL inspection in seconds.

WHY USE ScanINSPECT?

- **Mandatory:** 100% automatic inspection of adhesive dots after dispensing or printing.
- **Security:** Confirm glue dot absence/presence.
- **Necessity:** Detect errors before damaging down line machines.
- **Flexibility:** Inspect a wide variety of board sizes and shapes.



CONVEYOR MODULE

System Specifications

- Maximum Board Size: 18" X 20" (457mm X 508mm)**
- Minimum Board Size: 2" x 2" (50mm x 50mm)
- Maximum Inspection Area: 16.5" X 20" (419mm X 508mm)
- Resolution: Range from 200 to 2400 dpi
- SMEMA Interface
- CE Certified
- ** XL size conveyor

Computer

- Multi Core Processor - 3 GHz
- 1 TB 7200 RPM HD, 8 - 16 GB RAM
- Flat Panel Monitor
- Ethernet Connection
- Windows 7 or 10 - 64-Bit w/ 2 avail. USB2 or USB3 ports

Footprint

- Length: 41.7" (1060mm)
- Width: 42.9" (1089mm)
- Height: 57" (1450mm) excluding light tower
- Weight: 330lbs. (150kg)

(All specifications and designs subject to change without notice.)

The following are trademarks of the indicated companies: Gerber, Ucamco; Windows 7 and 10, Microsoft®. ScanINSPECT ADI™ is a trademark of ScanCAD International, Inc.



12779 W. Belleview Ave.
Littleton, CO. 80127 USA

T: +1 303.697.8888 F: +1 303.697.8580
info@scancad.com www.scancad.com